



for liquid media

**STAINLESS
STEEL**

www.chsgs.ru

ABOUT US



CHSGS Ltd. - as part of LD GROUP - is a leading Russian manufacturer of steel valves for district heating/cooling, natural gas, petroleum products and chemical industry. Established in 2002, the plant produces and distributes 1 200 000 items per year.



Today, LD is a famous quality mark recognized not only in Russia and CIS countries but also in Armenia, Azerbaijan, Belarus, Bulgaria, Estonia, Finland, Hungary, Kazakhstan, Kyrgyzstan, Latvia, Lithuania, Moldavia, Mongolia, Poland, Romania, Serbia, Slovakia, Sweden, Ukraine, Uzbekistan.

We comply with all necessary international requirements and standards, such as **ISO 9001:2015**, **PED 2014/68/EU**, **EN 488:2015**.



In order to guarantee competitive price and high quality only domestically produced raw materials are used for production of LD ball valves. For timely delivery, warehouses in Saint-Petersburg, Moscow and Novosibirsk are at your convenience and service.



LD ball valve major features:

- DN 15 – 1000, PN up to 40 bar
- Working media temp. -40°C (-60°C) to +200°C, ambient temp. -40°C (-60°C) to +80°C

Materials:

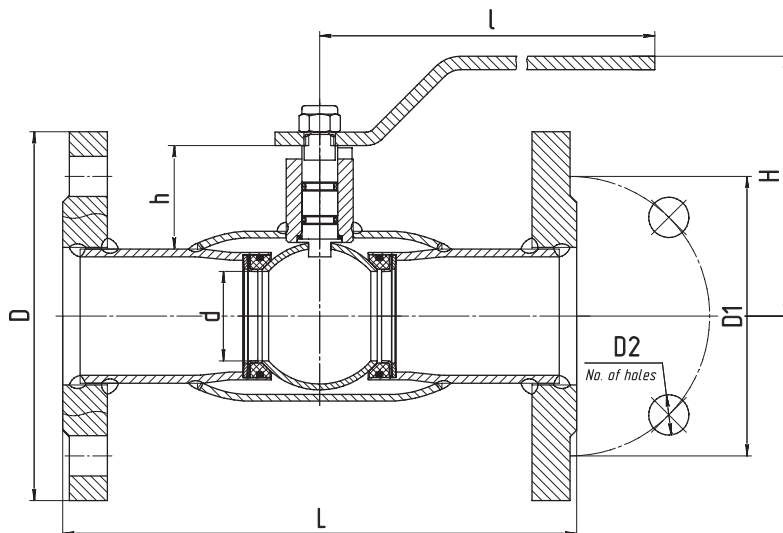
- carbon steel (Steel 20, 1.1151) for district heating/cooling, oil and gas (climate class N)
- alloyed steel (09G2S) for district heating/cooling, oil and gas (climate class NF)
- stainless steel (AISI 321, 1.4541) for utility water, non-aggressive media (climate class NF)
- stainless steel (AISI 321, 1.4541) for chemical industry (aggressive media, climate class NF)



- Tightness A rate acc. to EN12266-1
- Service life more than 30 years (10 000 cycles)
- Warranty 3 years



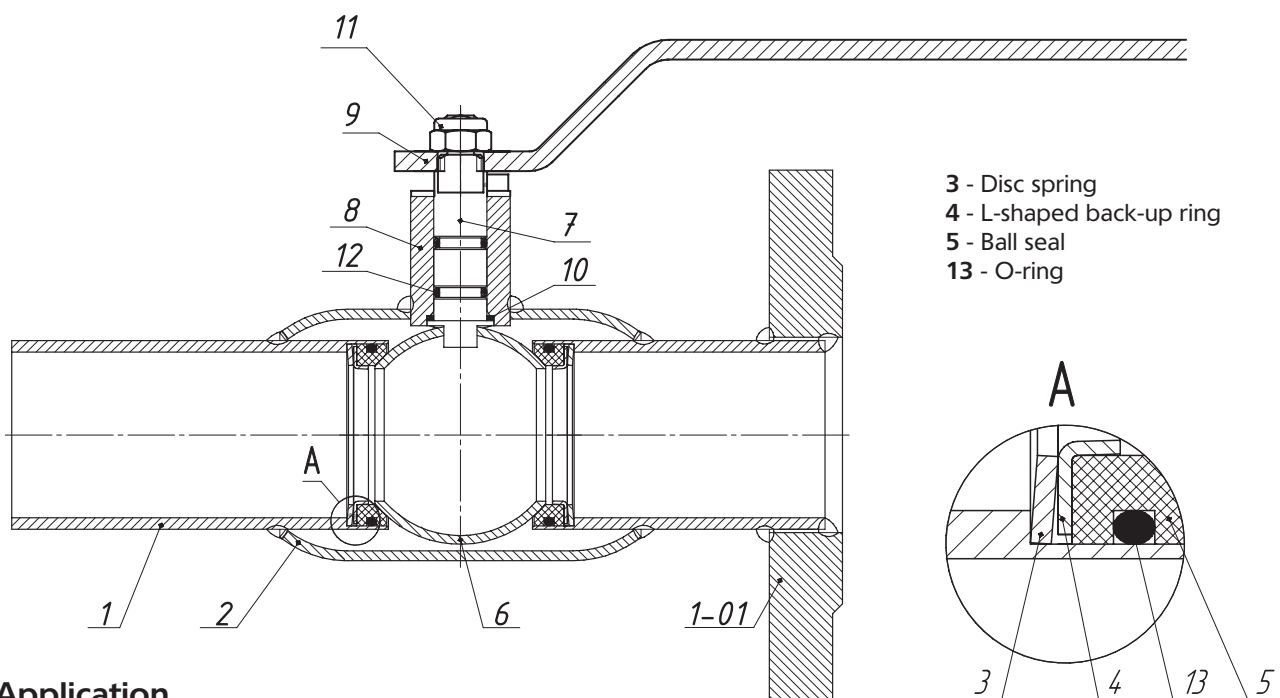
DESIGNATION AND IMPLEMENTATION TYPES OF LD BALL VALVES



| | X | XXX | X | XX | X |
|--|---|-----|---|----|---|
| Type of connection to pipeline: | | | | | |
| 1 - Flange 2 - Weld 3 - Thread 4 - Combined (Thread/Weld) | | | | | |
| Nominal diameter: | | | | | |
| DN | | | | | |
| Bore: | | | | | |
| 9 - Reduced bore No marking - Full bore | | | | | |
| Nominal pressure: | | | | | |
| PN | | | | | |
| Steel: | | | | | |
| 1 - Stainless steel | | | | | |

Example of designation of standard bore LD ball valve,
flange connection type, DN 80, PN 1,6 MPa, body from stainless steel: **1809161**

LD BALL VALVE CONSTRUCTION



Application

- Circulating water, drinking water, etanol, methanol, glycol
- Other media to be confirmed with manufacturer

MATERIALS OF MAIN PARTS

- Climate class: NF
- Color: Gray
- Material code: 01

- Steel grade: Stainless steel
- Working conditions and features:
Working media temp. -60°C to +200°C

| No | Part | Material |
|------|-----------------------|--|
| 1 | Welding end | AISI 321 H |
| 1-01 | Flange | AISI 321 H |
| 2 | Body | AISI 321 H |
| 3 | Disc spring | Zinc plated spring steel |
| 4 | L-shaped back-up ring | AISI 409 |
| 5 | Ball seal | PTFE+C |
| 6 | Ball | AISI 304, AISI 409, AISI 420 |
| 7 | Stem | AISI 420 |
| 8 | Stem shell | AISI 321 H |
| 9 | Handle | Zinc plated steel |
| 10 | Washer | PTFE |
| 11 | Nut | Corrosion resistant steel with polymer |
| 12 | Stem sealing ring | EPDM, FVMQ |
| 13 | O-ring | FVMQ |

BALL VALVE REDUCED BORE

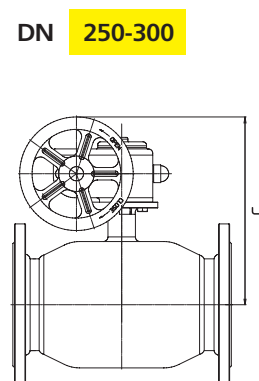
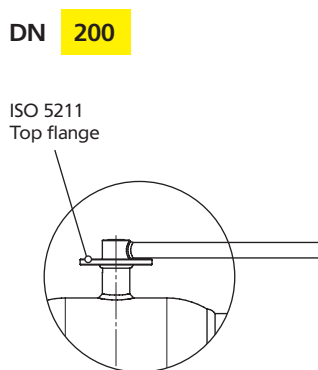
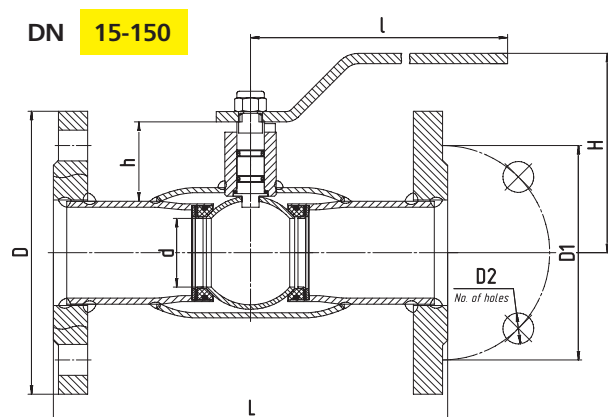
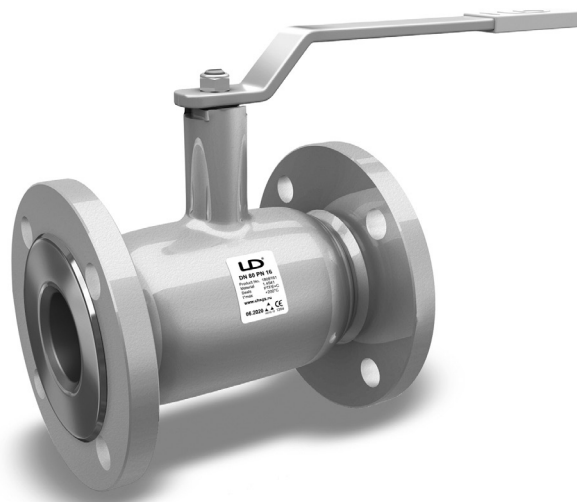


Material specification (Mat. code 01)

- **Body:** stainless steel AISI 321 H
- **Stem:** stainless steel AISI 420 (X20Cr13)
- **Ball:** stainless steel AISI 304, AISI 409, AISI 420
- **Stem sealing ring:** EPDM, FVMQ
- **Ball seal:** PTFE+C with additional seal made of FVMQ

Application

- Circulating water, drinking water, etanol, methanol, glycol
- Other media to be confirmed with manufacturer



| DN | PN | Code | d | l | D | D1 | D2 | No. of holes | h | H | C | L | Weight, kg |
|-----|----|------------|-----|-------|-----|-----|----|--------------|-----|-----|-----|-----|------------|
| 15 | 40 | 1159401 | 10 | 159 | 95 | 65 | 14 | 4 | 23 | 98 | - | 130 | 1,8 |
| 20 | 40 | 1209401 | 15 | 159 | 105 | 75 | 14 | 4 | 21 | 98 | - | 150 | 2,2 |
| 25 | 40 | 1259401 | 18 | 159 | 115 | 85 | 14 | 4 | 21 | 101 | - | 160 | 2,7 |
| 32 | 40 | 1329401 | 24 | 159 | 140 | 100 | 18 | 4 | 23 | 106 | - | 180 | 3,7 |
| 40 | 40 | 1409401 | 30 | 217 | 150 | 110 | 18 | 4 | 39 | 108 | - | 200 | 4,6 |
| 50 | 40 | 1509401 | 40 | 217 | 165 | 125 | 18 | 4 | 43 | 116 | - | 230 | 6,1 |
| 65 | 16 | 1659161 | 49 | 217 | 185 | 145 | 18 | 8 | 39 | 121 | - | 270 | 8,4 |
| 65 | 25 | 1659251 | 49 | 217 | 185 | 145 | 18 | 8 | 39 | 121 | - | 270 | 8,4 |
| 80 | 16 | 1809161 | 63 | 314,5 | 200 | 160 | 18 | 8 | 61 | 155 | - | 280 | 11,2 |
| 80 | 25 | 1809251 | 63 | 314,5 | 200 | 160 | 18 | 8 | 61 | 155 | - | 280 | 12 |
| 100 | 16 | 11009161 | 75 | 314,5 | 220 | 180 | 18 | 8 | 61 | 165 | - | 300 | 15 |
| 100 | 25 | 11009251 | 75 | 314,5 | 235 | 190 | 22 | 8 | 61 | 165 | - | 300 | 15 |
| 125 | 16 | 11259161 | 100 | 525 | 250 | 210 | 18 | 8 | 73 | 195 | - | 325 | 27,7 |
| 125 | 25 | 11259251 | 100 | 525 | 270 | 220 | 26 | 8 | 73 | 195 | - | 325 | 28,5 |
| 150 | 16 | 11509161 | 125 | 525 | 285 | 240 | 22 | 8 | 77 | 210 | - | 350 | 36 |
| 150 | 25 | 11509251 | 125 | 525 | 300 | 250 | 26 | 8 | 77 | 210 | - | 350 | 37 |
| 200 | 16 | 12009161 | 148 | 625 | 340 | 295 | 22 | 12 | 67 | 230 | - | 400 | 56 |
| 200 | 25 | 12009251 | 148 | 625 | 360 | 310 | 26 | 12 | 67 | 230 | - | 400 | 57 |
| 250 | 16 | 12509161/G | 200 | - | 405 | 355 | 26 | 12 | 80 | - | 471 | 530 | 83 |
| 250 | 25 | 12509251/G | 200 | - | 425 | 370 | 30 | 12 | 80 | - | 471 | 530 | 85 |
| 300 | 16 | 13009161/G | 240 | - | 460 | 410 | 26 | 12 | 167 | - | 681 | 750 | 155 |
| 300 | 25 | 13009251/G | 240 | - | 485 | 430 | 30 | 16 | 167 | - | 681 | 750 | 155 |

BALL VALVE FULL BORE



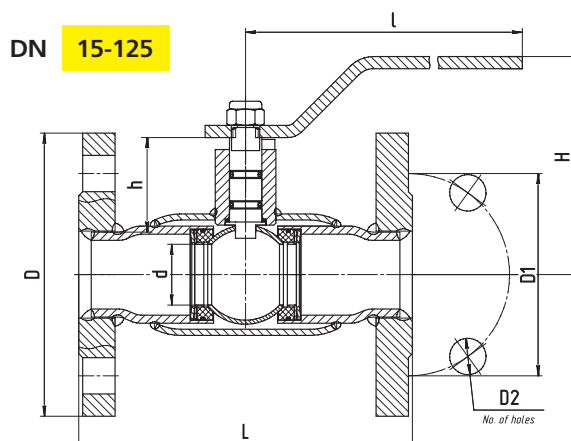
FLANGE/FLANGE

Material specification (Mat. code 01)

- **Body:** stainless steel AISI 321 H
- **Stem:** stainless steel AISI 420 (X20Cr13)
- **Ball:** stainless steel AISI 304, AISI 409, AISI 420
- **Stem sealing ring:** EPDM, FVMQ
- **Stem seal/washer:** PTFE+C, PTFE
- **Ball seal:** PTFE+C with additional seal made of FVMQ

Application

- Circulating water, drinking water, ethanol, methanol, glycol
- Other media to be confirmed with manufacturer



Design of DN 250

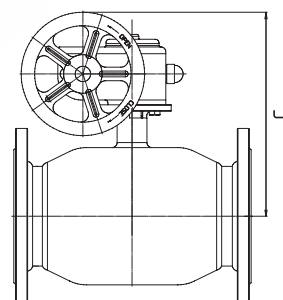
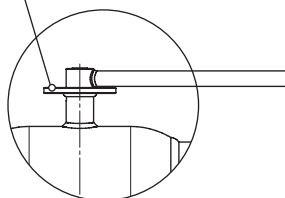


Design of DN 200

DN 150-200

DN 250

ISO 5211
Top flange



| DN | PN | Code | d | D | D1 | D2 | No. of holes | C | h | H | I | L | Weight, kg |
|-----|----|-----------|-----|-----|-----|----|--------------|-----|----|-----|-------|-----|------------|
| 15 | 40 | 115401 | 15 | 95 | 65 | 14 | 4 | - | 23 | 98 | 159 | 120 | 1,9 |
| 20 | 40 | 120401 | 18 | 105 | 75 | 14 | 4 | - | 21 | 98 | 159 | 140 | 2,5 |
| 25 | 40 | 125401 | 24 | 115 | 85 | 14 | 4 | - | 21 | 101 | 159 | 140 | 3,1 |
| 32 | 40 | 132401 | 30 | 140 | 100 | 18 | 4 | - | 23 | 106 | 217 | 165 | 4,2 |
| 40 | 40 | 140401 | 40 | 150 | 110 | 18 | 4 | - | 39 | 108 | 217 | 290 | 5,3 |
| 50 | 40 | 150401 | 49 | 165 | 125 | 18 | 4 | - | 43 | 116 | 217 | 300 | 7,1 |
| 65 | 16 | 165161 | 63 | 185 | 145 | 18 | 8 | - | 39 | 121 | 314,5 | 300 | 10,8 |
| 65 | 25 | 162251 | 63 | 185 | 145 | 18 | 8 | - | 39 | 121 | 314,5 | 300 | 10,8 |
| 80 | 16 | 180161 | 75 | 200 | 160 | 18 | 8 | - | 61 | 155 | 314,5 | 320 | 12,5 |
| 80 | 25 | 180251 | 75 | 200 | 160 | 18 | 8 | - | 61 | 155 | 314,5 | 320 | 12,5 |
| 100 | 16 | 1100161 | 100 | 220 | 180 | 18 | 8 | - | 61 | 165 | 525 | 350 | 23,2 |
| 100 | 25 | 1100251 | 100 | 235 | 190 | 22 | 8 | - | 61 | 165 | 525 | 350 | 23,2 |
| 125 | 16 | 1125161 | 125 | 250 | 210 | 18 | 8 | - | 73 | 195 | 525 | 380 | 33,4 |
| 125 | 25 | 1125251 | 125 | 270 | 220 | 26 | 8 | - | 73 | 195 | 525 | 380 | 37 |
| 150 | 16 | 1150161 | 148 | 285 | 240 | 22 | 8 | - | 77 | 210 | 625 | 410 | 44 |
| 150 | 25 | 1150251 | 148 | 300 | 250 | 26 | 8 | - | 77 | 210 | 625 | 410 | 46 |
| 200 | 16 | 1200161 | 200 | 340 | 295 | 22 | 12 | - | 67 | 230 | 625 | 530 | 71 |
| 200 | 25 | 1200251 | 200 | 360 | 310 | 26 | 12 | - | 67 | 230 | 625 | 530 | 72,6 |
| 250 | 16 | 1250161/G | 248 | 405 | 355 | 26 | 12 | 471 | 80 | 275 | - | 750 | 140 |
| 250 | 25 | 1250251/G | 248 | 425 | 370 | 30 | 12 | 471 | 80 | 275 | - | 750 | 140 |

BALL VALVE REDUCED BORE

○ WELD/WELD

Material specification (Mat. code 01)

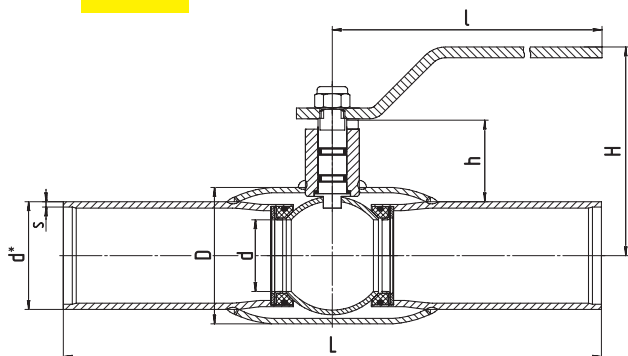
- **Body:** stainless steel AISI 321 H
- **Stem:** stainless steel AISI 420 (X20Cr13)
- **Ball:** stainless steel AISI 304, AISI 409, AISI 420
- **Stem sealing ring:** EPDM, FVMQ
- **Stem seal/washer:** PTFE+C, PTFE
- **Ball seal:** PTFE+C with additional seal made of FVMQ

Application

- Circulating water, drinking water, etanol, methanol, glycol
- Other media to be confirmed with manufacturer

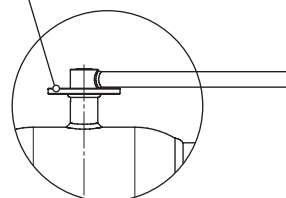


DN 15-150

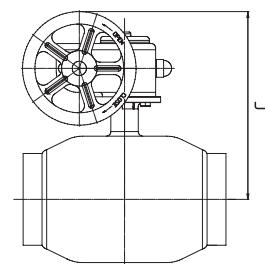


DN 200

ISO 5211
Top flange



DN 250-300



| DN | PN | Code | d | d* | D | h | H | C | s | L | Weight, kg |
|-----|----|------------|-----|-------|-----|-----|-----|-----|-----|-----|------------|
| 15 | 40 | 2159401 | 10 | 21,3 | 38 | 23 | 98 | - | 2 | 230 | 0,8 |
| 20 | 40 | 2209401 | 15 | 26,9 | 42 | 21 | 98 | - | 2,3 | 230 | 0,8 |
| 25 | 40 | 2259401 | 18 | 33,7 | 48 | 21 | 101 | - | 2,6 | 230 | 1,1 |
| 32 | 40 | 2329401 | 24 | 42,4 | 57 | 23 | 106 | - | 2,6 | 260 | 1,5 |
| 40 | 40 | 2409401 | 30 | 48,3 | 60 | 39 | 108 | - | 2,6 | 260 | 2 |
| 50 | 40 | 2509401 | 40 | 60,3 | 76 | 43 | 116 | - | 2,9 | 300 | 2,6 |
| 65 | 25 | 2659251 | 49 | 76,1 | 89 | 39 | 121 | - | 2,9 | 300 | 3,4 |
| 80 | 25 | 2809251 | 63 | 88,9 | 114 | 61 | 155 | - | 3,2 | 300 | 5,3 |
| 100 | 25 | 21009251 | 75 | 114,3 | 133 | 61 | 165 | - | 3,6 | 325 | 6,7 |
| 125 | 25 | 21259251 | 100 | 139,7 | 180 | 73 | 195 | - | 4 | 325 | 15,3 |
| 150 | 25 | 21509251 | 125 | 168,3 | 219 | 77 | 210 | - | 4,5 | 350 | 20,6 |
| 200 | 25 | 22009251 | 148 | 219,1 | 273 | 67 | 230 | - | 4,5 | 400 | 36 |
| 250 | 25 | 22509251/G | 200 | 273 | 351 | 80 | - | 471 | 5 | 530 | 54 |
| 300 | 25 | 23009251/G | 240 | 323,9 | 426 | 167 | - | 681 | 6,3 | 730 | 120 |

BALL VALVE FULL BORE

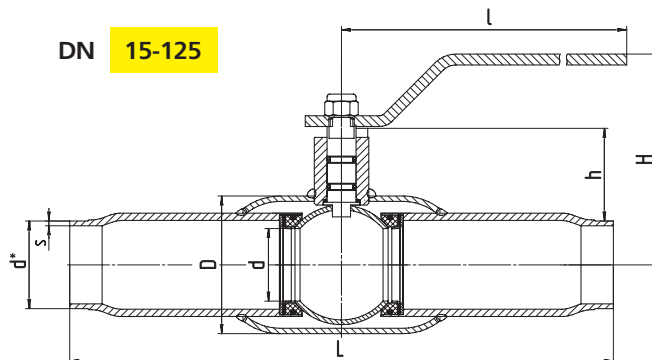
○ WELD/WELD

Material specification (Mat. code 01)

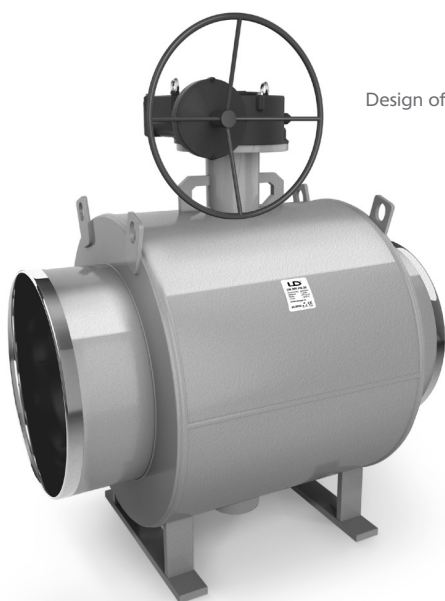
- **Body:** stainless steel AISI 321 H
- **Stem:** stainless steel AISI 420 (X20Cr13)
- **Ball:** stainless steel AISI 304, AISI 409, AISI 420
- **Stem sealing ring:** EPDM, FVMQ
- **Stem seal/washer:** PTFE+C, PTFE
- **Ball seal:** PTFE+C with additional seal made of FVMQ

Application

- Circulating water, drinking water, etanol, methanol, glycol
- Other media to be confirmed with manufacturer

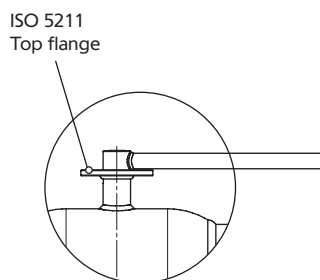


Design of DN 200

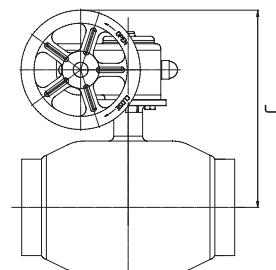


Design of DN 250

DN 150-200



DN 250



| DN | PN | CODE | d | d* | s | D | C | h | H | I | L | Weight, kg |
|-----|----|-----------|-----|-------|-----|-----|-----|----|-----|-------|-----|------------|
| 15 | 40 | 215401 | 15 | 21,3 | 2,0 | 27 | - | 23 | 98 | 159 | 230 | 0,8 |
| 20 | 40 | 220401 | 18 | 26,9 | 2,3 | 32 | - | 21 | 98 | 159 | 230 | 1,1 |
| 25 | 40 | 225401 | 24 | 33,7 | 2,6 | 38 | - | 21 | 101 | 159 | 260 | 1,5 |
| 32 | 40 | 232401 | 30 | 42,4 | 2,6 | 48 | - | 23 | 106 | 217 | 260 | 2,0 |
| 40 | 40 | 240401 | 40 | 48,3 | 2,9 | 57 | - | 39 | 108 | 217 | 300 | 2,6 |
| 50 | 40 | 250401 | 49 | 60,3 | 2,9 | 76 | - | 43 | 116 | 217 | 300 | 3,4 |
| 65 | 25 | 265251 | 63 | 76,1 | 3,2 | 89 | - | 39 | 121 | 314,5 | 300 | 5,3 |
| 80 | 25 | 280251 | 75 | 88,9 | 3,6 | 108 | - | 61 | 155 | 314,5 | 325 | 6,7 |
| 100 | 25 | 2100251 | 100 | 114,3 | 3,6 | 133 | - | 61 | 165 | 525 | 325 | 15,3 |
| 125 | 25 | 2125251 | 125 | 139,7 | 3,6 | 159 | - | 73 | 195 | 525 | 360 | 20,6 |
| 150 | 25 | 2150251 | 148 | 168,3 | 5,0 | 180 | - | 77 | 210 | 625 | 400 | 29,6 |
| 200 | 25 | 2200251 | 200 | 219,1 | 5,0 | 245 | - | 67 | 230 | 625 | 530 | 53,0 |
| 250 | 25 | 2250251/G | 240 | 273,0 | 5,0 | 325 | 471 | 80 | 275 | - | 730 | 120,0 |

BALL VALVE REDUCED/FULL BORE



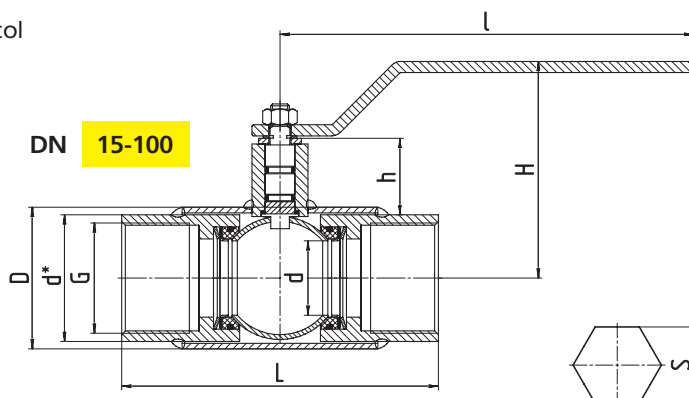
THREAD/THREAD

Material specification (Mat. code 01)

- **Body:** stainless steel AISI 321 H
- **Stem:** stainless steel AISI 420 (X20Cr13)
- **Ball:** stainless steel AISI 304, AISI 409, AISI 420
- **Stem sealing ring:** EPDM, FVMQ
- **Stem seal/washer:** PTFE+C, PTFE
- **Thread:** straight pipe thread

Application

- Circulating water, drinking water, etanol, methanol, glycol
- Other media to be confirmed with manufacturer



Technical data for reduced bore valve

| DN | PN | Code | S | d* | d | D | G | h | H | I | L | Weight, kg |
|-----|----|----------|----|-----|----|-----|-------|----|-----|-------|-----|------------|
| 15 | 40 | 3159401 | 27 | - | 10 | 38 | 1/2 | 23 | 98 | 159 | 135 | 0,8 |
| 20 | 40 | 3209401 | 32 | - | 15 | 42 | 3/4 | 21 | 98 | 159 | 135 | 0,8 |
| 25 | 40 | 3259401 | 41 | - | 18 | 48 | 1 | 21 | 101 | 159 | 135 | 1,2 |
| 32 | 40 | 3329401 | - | 48 | 24 | 57 | 1 1/4 | 23 | 106 | 159 | 135 | 1,5 |
| 40 | 40 | 3409401 | - | 55 | 30 | 60 | 1 1/2 | 39 | 108 | 217 | 155 | 1,9 |
| 50 | 40 | 3509401 | - | 68 | 40 | 76 | 2 | 43 | 116 | 217 | 170 | 2,9 |
| 65 | 25 | 3659251 | - | 84 | 49 | 89 | 2 1/2 | 39 | 121 | 217 | 190 | 4,0 |
| 80 | 25 | 3809251 | - | 98 | 63 | 114 | 3 | 61 | 155 | 314,5 | 200 | 5,8 |
| 100 | 25 | 31009251 | - | 133 | 75 | 133 | 4 | 61 | 165 | 314,5 | 240 | 11,7 |

Technical data for full bore valve

| DN | PN | Code | S | d* | d | D | G | h | H | I | L | Weight, kg |
|----|----|--------|----|-----|----|-----|-------|----|-----|-------|-----|------------|
| 15 | 40 | 315401 | 27 | - | 15 | 42 | 1/2 | 23 | 98 | 159 | 135 | 0,8 |
| 20 | 40 | 320401 | 41 | - | 18 | 48 | 3/4 | 21 | 98 | 159 | 135 | 1,2 |
| 25 | 40 | 325401 | 41 | - | 24 | 57 | 1 | 21 | 101 | 159 | 135 | 1,5 |
| 32 | 40 | 332401 | - | 55 | 30 | 60 | 1 1/4 | 23 | 106 | 217 | 155 | 1,9 |
| 40 | 40 | 340401 | - | 68 | 40 | 76 | 1 1/2 | 39 | 108 | 217 | 170 | 2,9 |
| 50 | 40 | 350401 | - | 81 | 49 | 89 | 2 | 43 | 116 | 217 | 190 | 4,0 |
| 65 | 25 | 365251 | - | 99 | 64 | 114 | 2 1/2 | 39 | 121 | 314,5 | 200 | 5,8 |
| 80 | 25 | 380251 | - | 133 | 75 | 133 | 3 | 61 | 155 | 314,5 | 240 | 11,5 |

SERVICE BALL VALVE

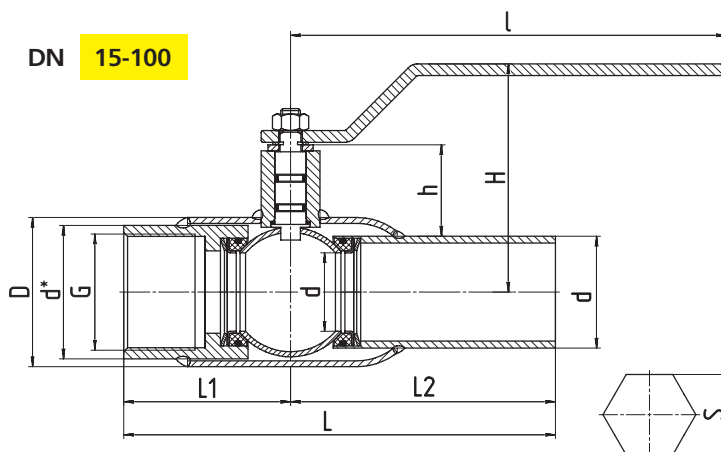
 COMBINED (THREAD/WELD)

Material specification (Mat. code 01)

- **Body:** stainless steel AISI 321 H
- **Stem:** stainless steel AISI 420 (X20Cr13)
- **Ball:** stainless steel AISI 304, AISI 409, AISI 420
- **Stem sealing ring:** EPDM, FVMQ
- **Stem seal/washer:** PTFE+C, PTFE
- **Thread:** straight pipe thread

Application

- Circulating water, drinking water, ethanol, methanol, glycol
- Other media to be confirmed with manufacturer



| DN | PN | Code | S | d* | D | G | L1 | L2 | h | H | I | d | L | Weight, kg |
|-----|----|----------|----|-----|-----|-------|------|-----|----|-----|-------|-------|-----|------------|
| 15 | 40 | 4159401 | 27 | - | 38 | 1/2 | 67,5 | 100 | 23 | 98 | 159 | 21,3 | 183 | 0,5 |
| 20 | 40 | 4209401 | 32 | - | 42 | 3/4 | 68 | 100 | 21 | 98 | 159 | 26,9 | 183 | 0,7 |
| 25 | 40 | 4259401 | 41 | - | 48 | 1 | 68 | 115 | 21 | 101 | 159 | 33,7 | 183 | 1,0 |
| 32 | 40 | 4329401 | - | 48 | 57 | 1 1/4 | 68 | 115 | 23 | 106 | 159 | 42,4 | 198 | 1,1 |
| 40 | 40 | 4409401 | - | 55 | 60 | 1 1/2 | 78 | 125 | 39 | 108 | 217 | 48,3 | 208 | 1,6 |
| 50 | 40 | 4509401 | - | 68 | 76 | 2 | 85 | 135 | 43 | 116 | 217 | 60,3 | 235 | 2,4 |
| 65 | 25 | 4659251 | - | 84 | 89 | 2 1/2 | 95 | 140 | 39 | 121 | 217 | 76,1 | 245 | 3,4 |
| 80 | 25 | 4809251 | - | 98 | 114 | 3 | 100 | 140 | 61 | 155 | 314,5 | 88,9 | 250 | 5,1 |
| 100 | 25 | 41009251 | - | 133 | 133 | 4 | 120 | 150 | 61 | 165 | 314,5 | 114,3 | 283 | 8,7 |

BALL VALVE REGULA

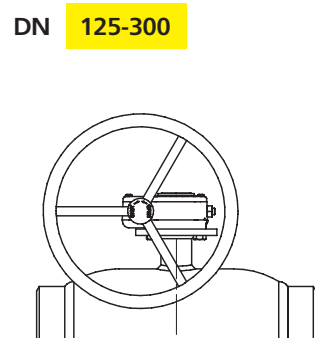
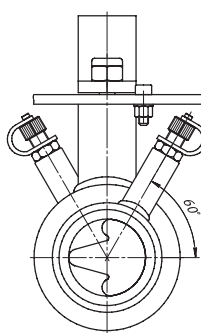
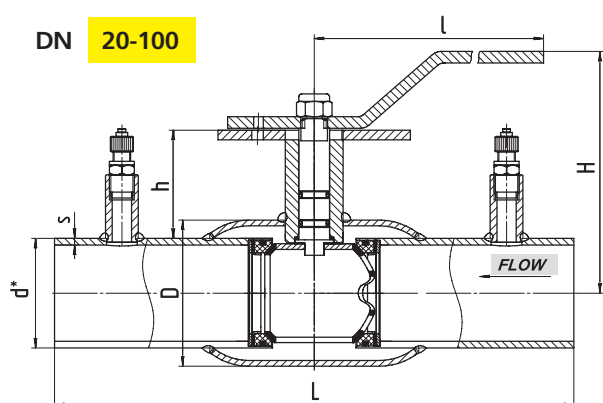
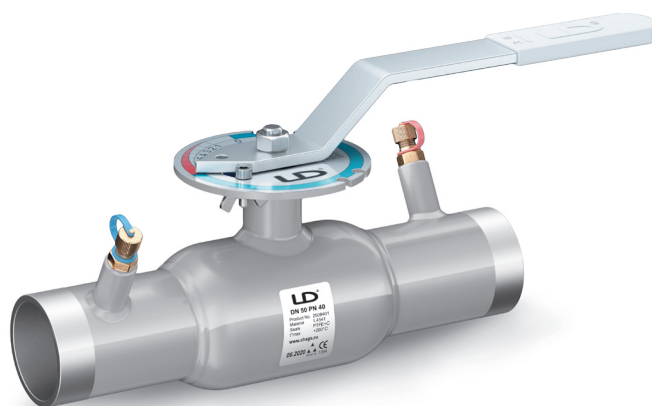
○ WELD/WELD

Material specification (Mat. code 01)

- **Body:** stainless steel AISI 321 H
- **Stem:** stainless steel AISI 420 (X20Cr13)
- **Ball:** stainless steel AISI 304, AISI 409, AISI 420
- **Stem sealing ring:** EPDM, FVMQ
- **Ball seal:** G439 with additional seal made of FVMQ
- **Measuring units:** Brass

Application

- Circulating water, drinking water, etanol, methanol, glycol
- Other media to be confirmed with manufacturer



Technical data for reduced bore valve

| DN | PN | Code | d* | s | D | h | H | I | L |
|-----|----|--------------|-------|-----|-----|-----|-----|-------|-----|
| 20 | 40 | R-2209401 | 26,9 | 2,3 | 42 | 21 | 98 | 159 | 230 |
| 25 | 40 | R-2259401 | 33,7 | 2,6 | 48 | 21 | 101 | 159 | 230 |
| 32 | 40 | R-2329401 | 42,4 | 2,6 | 57 | 23 | 106 | 159 | 260 |
| 40 | 40 | R-2409401 | 48,3 | 2,6 | 60 | 39 | 108 | 217 | 260 |
| 50 | 40 | R-2509401 | 60,3 | 2,9 | 76 | 43 | 116 | 217 | 300 |
| 65 | 25 | R-2659251 | 76,1 | 2,9 | 89 | 39 | 121 | 217 | 300 |
| 80 | 25 | R-2809251 | 88,9 | 3,2 | 114 | 61 | 155 | 314,5 | 300 |
| 100 | 25 | R-21009251 | 114,3 | 3,6 | 133 | 61 | 165 | 314,5 | 325 |
| 125 | 25 | R-21259251/G | 139,7 | 4,0 | 180 | 73 | - | - | 325 |
| 150 | 25 | R-21509251/G | 168,3 | 4,0 | 219 | 77 | - | - | 350 |
| 200 | 25 | R-22009251/G | 219,1 | 4,5 | 273 | 67 | - | - | 400 |
| 250 | 25 | R-22509251/G | 273,0 | 5,0 | 351 | 80 | - | - | 530 |
| 300 | 25 | R-23009251/G | 323,9 | 5,6 | 426 | 167 | - | - | 730 |

BALL VALVE REGULA

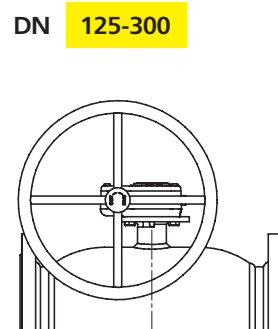
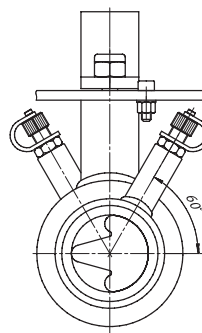
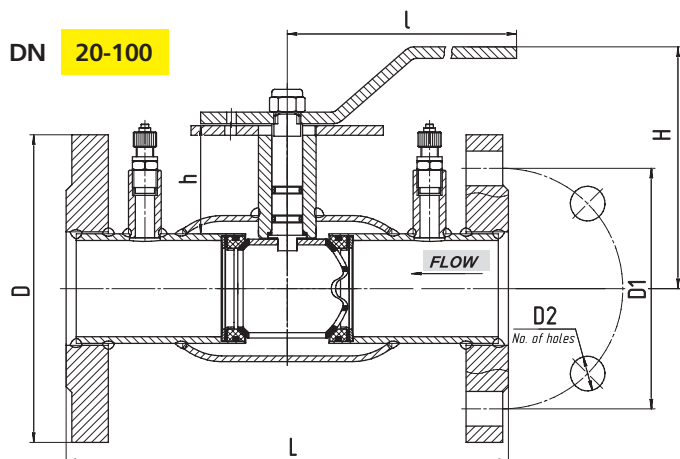
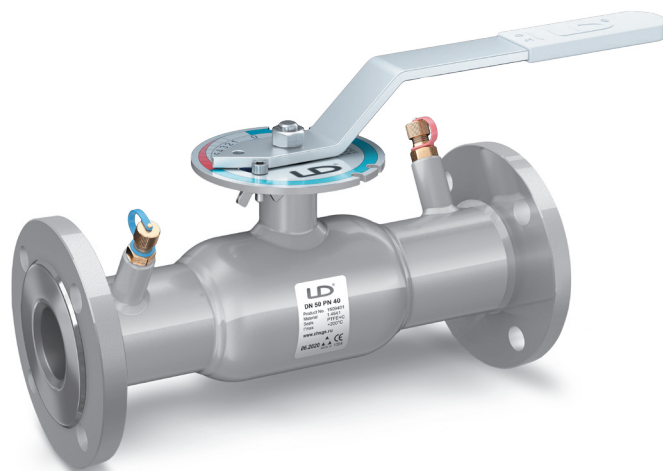
FLANGE/FLANGE

Material specification (Mat. code 01)

- **Body:** stainless steel AISI 321 H
- **Stem:** stainless steel AISI 420 (X20Cr13)
- **Ball:** stainless steel AISI 304, AISI 409, AISI 420
- **Stem sealing ring:** EPDM, FVMQ
- **Ball seal:** G439 with additional seal made of FVMQ
- **Measuring units:** Brass

Application

- Circulating water, drinking water, etanol, methanol, glycol
- Other media to be confirmed with manufacturer



Technical data for reduced bore valve

| DN | PN | Code | D | D1 | D2 | No. of holes | h | H | I | L |
|-----|----|--------------|-----|-----|----|--------------|-----|-----|-------|-----|
| 20 | 40 | R-2209401 | 105 | 75 | 14 | 4 | 21 | 98 | 159 | 150 |
| 25 | 40 | R-2259401 | 115 | 85 | 14 | 4 | 21 | 101 | 159 | 160 |
| 32 | 40 | R-2329401 | 140 | 100 | 18 | 4 | 23 | 106 | 159 | 180 |
| 40 | 40 | R-2409401 | 150 | 110 | 18 | 4 | 39 | 108 | 217 | 200 |
| 50 | 40 | R-2509401 | 165 | 125 | 18 | 4 | 43 | 116 | 217 | 230 |
| 65 | 16 | R-2659161 | 185 | 145 | 18 | 8 | 39 | 121 | 217 | 270 |
| 65 | 25 | R-2659251 | 185 | 145 | 18 | 8 | 39 | 121 | 217 | 270 |
| 80 | 16 | R-2809161 | 200 | 160 | 18 | 8 | 61 | 155 | 314,5 | 280 |
| 80 | 25 | R-2809251 | 200 | 160 | 18 | 8 | 61 | 155 | 314,5 | 280 |
| 100 | 16 | R-21009161 | 200 | 180 | 18 | 8 | 61 | 165 | 314,5 | 300 |
| 100 | 25 | R-21009251 | 235 | 190 | 22 | 8 | 61 | 165 | 314,5 | 300 |
| 125 | 16 | R-21259161/G | 250 | 210 | 18 | 8 | 73 | - | - | 325 |
| 125 | 25 | R-21259251/G | 270 | 220 | 26 | 8 | 73 | - | - | 325 |
| 150 | 16 | R-21509161/G | 285 | 240 | 22 | 8 | 77 | - | - | 350 |
| 150 | 25 | R-21509251/G | 300 | 250 | 26 | 8 | 77 | - | - | 350 |
| 200 | 16 | R-22009161/G | 340 | 295 | 22 | 12 | 67 | - | - | 400 |
| 200 | 25 | R-22009251/G | 360 | 310 | 26 | 12 | 67 | - | - | 400 |
| 250 | 16 | R-22509161/G | 405 | 355 | 26 | 12 | 80 | - | - | 500 |
| 250 | 25 | R-22509251/G | 425 | 370 | 30 | 12 | 80 | - | - | 500 |
| 300 | 16 | R-23009161/G | 460 | 410 | 26 | 12 | 167 | - | - | 500 |
| 300 | 25 | R-23009251/G | 485 | 430 | 30 | 12 | 167 | - | - | 500 |

 **TECHNICKÁ INŠPEKCIA, a.s.**
CEOC
INTERNATIONAL
SLOVENSKÁ REPUBLIKA
CERTIFICATE
no. 4854/4/2019

Technická inšpekcia, a. s., Trnavská cesta 56, 821 01 Bratislava, Slovakia
notified body: 1354,

on the basis of results from assessment of full quality assurance system
notifies, that
LLC "ChelyabinskSpetsGrazhdanStroy"
Yeniseyskaya 47, 454010 Chelyabinsk, RUSSIA

implemented and applies system of full quality assurance (module H)
according to the European Directive 2014/68/EU on pressure equipment

Range of equipment:
Ball Valve - LD Type, DN 25 - 800, PN 16 - 40, TS_{max} = 200 °C, TS_{min} = - 60 °C
made of carbon and stainless steel
Ball Valve - LD Swift Type, DN 32 - 100, PN 16, TS_{max} = 150 °C, TS_{min} = - 60 °C
made of carbon and stainless steel
(see Annex to the Certificate for details)

Audit Report no. 4854/4/2019

Manufacturer shall inform Technická inšpekcia, a. s. of any intended change of system of full quality assurance (module H).

Certificate is valid until 9th October 2022

The Certificate validity is conditioned with performing of surveillance by Technická inšpekcia, a. s. for minimum 1 periodic audit per 12 months. Performing of periodic audit is proved by Audit Report.

Date of initial notification: 1st October 2013

Bratislava, on 10th October 2019



Ing. Dušan Perniš
General Director

420119
CST4-190



**FEDERAL AGENCY OF TECHNICAL
REGULATION AND METROLOGY
VOLUNTARY CERTIFICATION SYSTEM
"FEDERAL QUALITY SYSTEM"**
Reg.no. POCC RU.31322.04ЖУН0

Certification body:
REG NO. FSK.RU.0002
Limited Liability Company
"EURASIAN UNION CERTIFICATION"
Address: 192289, St. Petersburg, Oleko Dundicha street
house number 35, building 1, letter A, room 2-H office 4.
Phone: 8(812) 649-93-88 info@essert.ru

CERTIFICATE OF COMPLIANCE
№ FSK.RU.0002.F0006632
is issued to

Limited Liability Company "ChelyabinskSpetsGrazhdanStroy"
Address: Yeniseyskaya, 47, Chelyabinsk, Russia, 454010.
ITN 7451211335 PSRN 1047423538315

Date of issue: 16/01/2018 Period of validity: 16/01/2021

This certificate certifies that:
*The quality management system for designing, engineering,
manufacturing and delivery of valves, valve components, wholesale and retail trade*

COMPLIES WITH THE REQUIREMENTS OF GOST R ISO 9001-2015 (ISO 9001: 2015)

Head of certification body
A.V. Arendar 



Expert
V.V. Akimov 

This certificate requires of organization to maintain the states of the work according to the above standard
which the certification center of voluntary certification system "Federal Quality system" will oversee and it will be confirmed by an annual inspection.

| | | |
|---|---|---|
|  „SGS Beograd“ d. o. o. Jurija Gagarina 7b 11070 Beograd, Srbija | SERTIFIKAT O USAGLAŠENOSTI CERTIFICATE OF CONFORMITY modul H | Imenovano telo broj / Designated Body I016 |
| Sertifikat broj / Certificate No.: 190824 Prema Pravilniku o tehničkim zahtevima za projektovanje, izradu i ocenjivanje usaglašenosti opreme pod pritiskom (Službeni Glasnik RS broj 87/2011) / According to Rulebook of technical requirements for design, manufacture and conformity assessment of pressure equipment (Official Gazette of RS 87/2011) | | |
| Klijent / Client: | LLC ChelyabinskSpetsGrazhdanStroy, Yeniseyskaya str. 47, 454010 Chelyabinsk, Russian Federation / ООО "Челябинск СпецГражданСтрой", Российская Федерация, 454010 г. Челябинск, ул. Енисейская, 47 | |
| Proizvođač / Manufacturer: | LLC ChelyabinskSpetsGrazhdanStroy, Yeniseyskaya str. 47, 454010 Chelyabinsk, Russian Federation / ООО "Челябинск СпецГражданСтрой", Российская Федерация, 454010 г. Челябинск, ул. Енисейская, 47 | |
| PREDMET OCENJIVANJA / Subject of assessment: | | |
| Naziv opreme / Equipment: | Loptaste slavine / Ball valve | |
| Tip/Type: | LD type (max DN 800, PN 16÷40), LD Swift type (DN 32÷100, PN16) | |
| Ocenjivanje usaglašenosti predmetne opreme pod pritiskom izvršeno na osnovu zahteva br. / Conformity assessment of the pressure equipment is done according to request No. 190824 Izveštaj broj / Report No.: 50-2 0718/19 Note: Proizvođač poseduje sertifikat o usaglašenosti opreme pod pritiskom/ The manufacturer has certificate according to PED 2014/68/EU, prema modulu/according to: module H, izdate od Notifikovanog tela /issued by Notified Body: 1354 Validity of issued certificate correspond to validity of PED "CE" Certificate | | |
| IZJAVA O USAGLAŠENOSTI / CONFORMITY STATEMENT: | | |
| Ovim potvrđujemo da je predmetna oprema ocenjena prema zahtevima Pravilnika o tehničkim zahtevima za projektovanje, izradu i ocenjivanje usaglašenosti opreme pod pritiskom (Službeni Glasnik RS broj 87/2011). / We hereby confirm that pressure equipment has been assessed in compliance with Rulebook on technical requirements for the design, manufacture and conformity assessment of pressure equipment Primenjeni modul/Module applied: H Proizvođaču se odobrava nanošenje znaka usaglašenosti sa navođenjem identifikacionog broja „SGS Beograd“ za proizvode koji su bili predmet ocenjivanja. The manufacturer is authorized to apply the conformity mark with the indication number of designated body "SGS Beograd" for products which were the subject of conformity assessment | | Znak usaglašenosti / Conformity mark:  I016 19 |
| Prilozi / Attachments: - | Važnost sertifikata / Validity of certificate: 09.10.2022. Uz obavezne godišnje provere / With mandatory Annual surveillance audits | |
| Mesto izdavanja / Place of issue: | Belgrade | |
| Datum izdavanja / Date of issue: | 14.11.2019 | |
|  „SGS Beograd“ d. o. o. Marinko Ukropina | | |

This document is issued by the Company under its General Conditions of Service accessible at <http://www.sgs.com/en/Terms-and-Conditions.aspx>. Attention is drawn to the limitation of liability, indemnification and jurisdiction issues defined therein.

Any holder of this document is advised that information contained hereon reflects the Company's findings at the time of its intervention only and within the limits of Client's instructions, if any. The Company's sole responsibility is to its Client and this document does not exonerate parties to a transaction from exercising all their rights and obligations under the transaction documents. Any unauthorized alteration, forgery or falsification of the content or appearance of this document is unlawful and offenders may be prosecuted to the fullest extent of the law.

SGS Beograd Ltd | Jurija Gagarina 7b 11000 Beograd Serbia t (381-11) 71.55.275 t (381-11) 71.55.276 t (381-11) 71.55.277
 sgs.beograd @sgs.com www.sgs.com t (381-11) 71.55.278 f (381-11) 22.84.241 f (381-11) 71.55.279
 Member of the SGS Group (Société Générale de Surveillance)

EUROHEAT & POWER

CERTIFICATE NUMBER 05/01

| | |
|-------------------------|--|
| PRODUCT | LD steel ball valves, for preinsulated district heating and cooling valve assemblies, DN 25 - 500 |
| LICENSEE | LLC ChelyabinskSpetsGrazhdanStroy |
| PRODUCTION PLANT | LLC ChelyabinskSpetsGrazhdanStroy Russian Federation 454010 Chelyabinsk Yeniseiskaya str. 47 |



**EUROHEAT
& POWER**

GUIDELINES:
EHP/003
CERTIFICATE: 05/01

VALID UNTIL 29.05.2025

This certificate is granted in accordance with the Euroheat & Power Certification Guidelines for Quality Assessment of District Heating Steel Valves [003]

Name, Signature



Mikko Törmänen

Date, Place

30.05.2019, Helsinki



Inspecta Sertifiointi Oy
P.O Box 1000
Sörnäistenkatu 2
FI-00581 Helsinki
Finland
www.inspecta.com

The production complies with the EN488:2015 and EHP Certification Guidelines [003].

The licensee may use the Euroheat & Power Certification Board quality mark.

The certificate is valid only for the production plant mentioned in the certificate.

The valve types covered are contained in the Annex to this certificate.

The certificate is valid for 6 years subject to periodic surveillance.

c
e
r
t
i
f
i
c
a
t
e

LD GROUP, Yeniseyskaya str. 47, 454010, Chelyabinsk, Russia
Phone: +7 (351) 730-47-47, ext. 105
e-mail: global@chsgs.ru



www.chsgs.ru



Your personal manager



The content of this catalogue is for your reference only
and is subject to be revised without any notice.
The catalogue may contain typographical errors.